



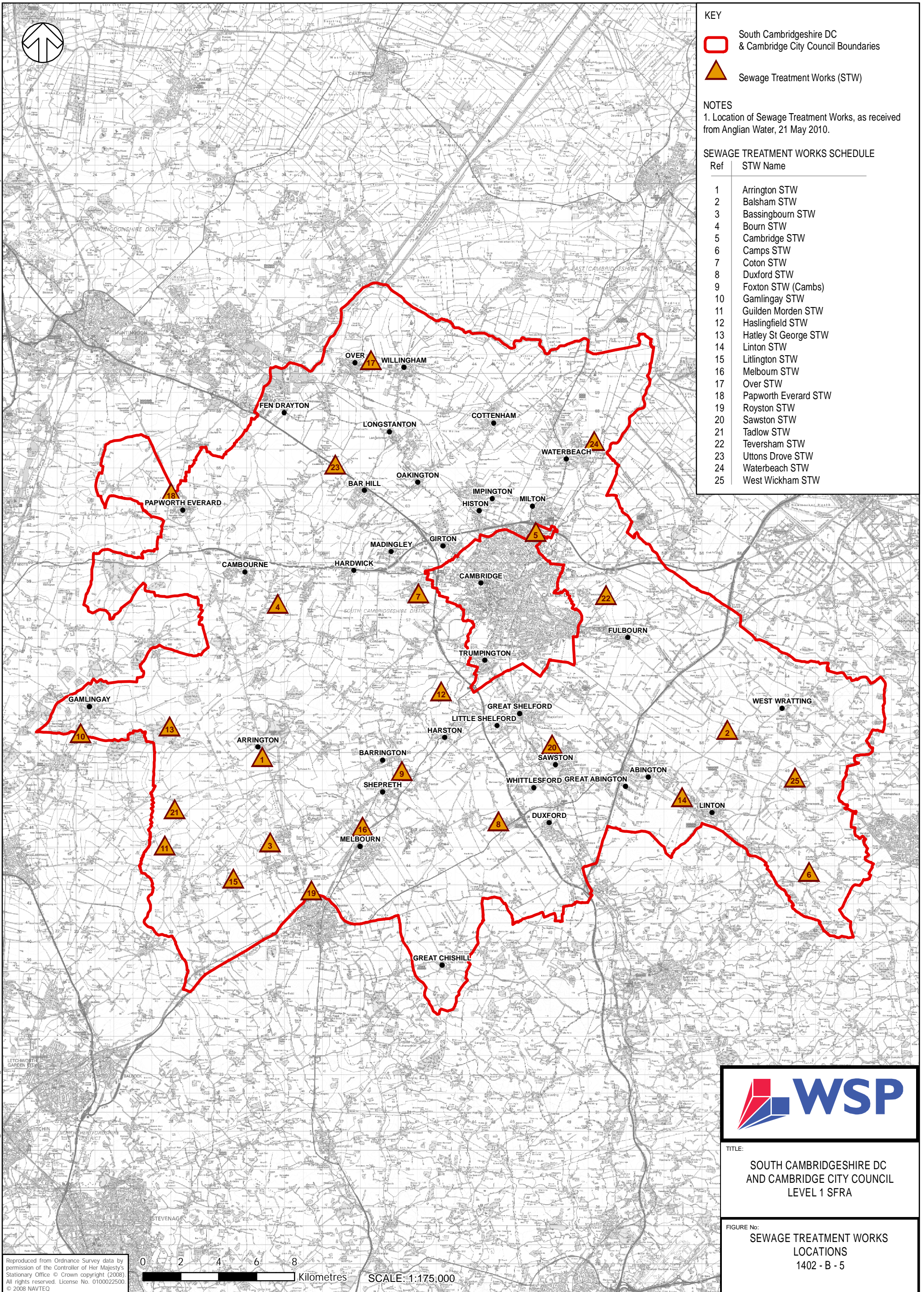


- KEY**
-  South Cambridgeshire DC & Cambridge City Council Boundaries
  -  Sewage Treatment Works (STW)

**NOTES**  
 1. Location of Sewage Treatment Works, as received from Anglian Water, 21 May 2010.

**SEWAGE TREATMENT WORKS SCHEDULE**

Ref	STW Name
1	Arrington STW
2	Balsham STW
3	Bassingbourn STW
4	Bourn STW
5	Cambridge STW
6	Camps STW
7	Coton STW
8	Duxford STW
9	Foxton STW (Cambs)
10	Gamlingay STW
11	Guiden Morden STW
12	Haslingfield STW
13	Hatley St George STW
14	Linton STW
15	Litlington STW
16	Melbourn STW
17	Over STW
18	Papworth Everard STW
19	Royston STW
20	Sawston STW
21	Tadlow STW
22	Teversham STW
23	Uttons Drove STW
24	Waterbeach STW
25	West Wickham STW



**TITLE:**  
 SOUTH CAMBRIDGESHIRE DC  
 AND CAMBRIDGE CITY COUNCIL  
 LEVEL 1 SFRA

**FIGURE No:**  
 SEWAGE TREATMENT WORKS  
 LOCATIONS  
 1402 - B - 5

Reproduced from Ordnance Survey data by permission of the Controller of Her Majesty's Stationary Office. © Crown copyright (2008). All rights reserved. License No. 0100022500. © 2008 NAVTEC

0 2 4 6 8 Kilometres  
 SCALE: 1:175,000